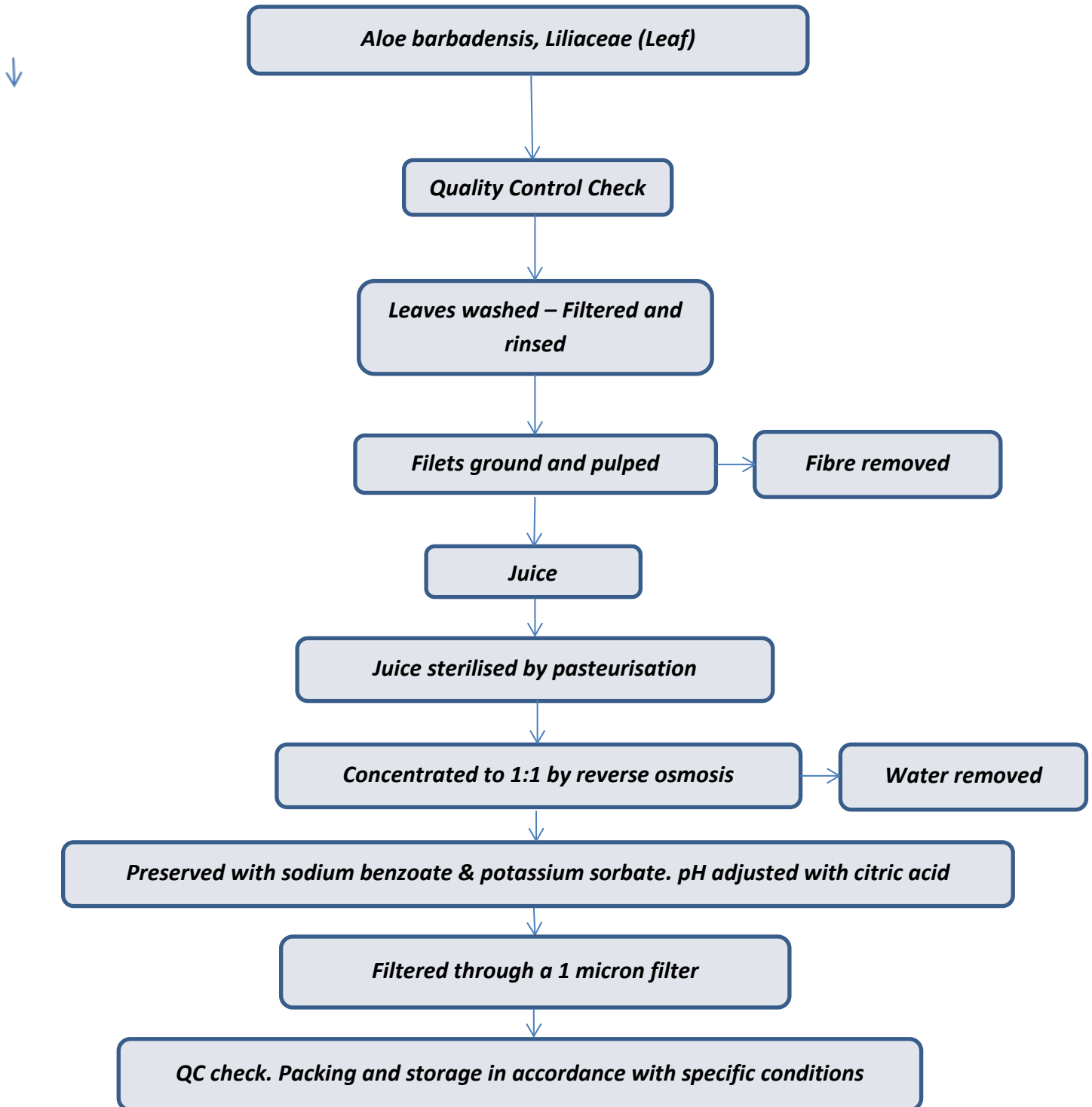


Certificate of Analysis

PRODUCT DETAILS		
Product Name	ALOE VERA JUICE 1:1 CONCENTRATE	
Product Code	ALOEVE1001	
INCI Name	>75 to <100 Aloe barbadensis leaf juice >0.1 to < 1.0 Citric Acid <0.1 Sodium benzoate <0.1 Potassium sorbate	
Best Before Date	January 2025	
Batch Number	4493610	
Our Reference		
Manufacturing Process	This juice is expressed from the centre fillet of the Aloe plant, Aloe barbadensis liliaceae and reserved by the addition of Citric Acid, Sodium benzoate and potassium sorbate.	
Identification	CAS No: NA	EINECS No: 287-390-8
PHYSICAL AND CHEMICAL CHARACTERISTIC		
	SPECIFICATION RANGE	RESULTS
Appearance	Liquid	Conforms
Colour	Colourless to Amber	Conforms
Odour	Characteristic	Conforms
Specific Gravity @ 20°C	0.997 - 1.009	1.005
pH @ 20°C	3.5 - 5.0	4.33
Microbiological test (cfu/g)	<10.0	Conforms
Solids Content (%)	>0.5	Conforms
STORAGE AND SHELF LIFE		
Storage	Store in tightly closed container with minimum headspace in a cool,	
Shelf Life	24 months unopened and stored as above.	
<p><small>DISCLAIMER: This information relates only to the specific material designated and may not be valid for such material used in combination with any other materials or in any process. Such information is, to the best of the Company's knowledge and belief, accurate and reliable as of the date indicated. However, no warranty, guarantee or representation is made to its accuracy, reliability or completeness. It is the users responsibility to satisfy himself as to the suitability of such information for his own particular use. Where Madar Corporation Limited make a declaration that allergenic material are not present in any product, this statement is made assuming reasonable levels of detection. It is impossible to guarantee the "absolute absence" of any material. It is the ultimate responsibility of the customer to ensure the safety of the intended final product containing this material, by carrying out additional tests if necessary.</small></p>		

FLOW CHART ALOE VERA JUICE 1:1 CONCENTRATE





SAFETY DATA SHEET
ALOE VERA JUICE 1:1 CONCENTRATE

SECTION 1: Identification of the substance/mixture and of the company/undertaking

1.1. Product identifier

Product name	ALOE VERA JUICE 1:1 CONCENTRATE
Product number	RMALOEVERA
REACH registration notes	REACH exempt - Mixture - a natural substance. Regulation (EC) No 987/2008, Annex II, paragraph 8.

1.2. Relevant identified uses of the substance or mixture and uses advised against

Identified uses	Cosmetic agent
------------------------	----------------

1.3. Details of the supplier of the safety data sheet

Supplier	Madar Corporation Limited 19 - 20 Sandleheath Industrial Estate Fordingbridge SP6 1PA Tel. +44 1425 655555 (Opening Hours Mon - Fri 9.00am - 5.00pm) Email - technical@madarcorporation.co.uk
-----------------	--

1.4. Emergency telephone number

SECTION 2: Hazards identification

2.1. Classification of the substance or mixture

Classification (EC 1272/2008)

Physical hazards	Not Classified
Health hazards	Not Classified
Environmental hazards	Not Classified

2.2. Label elements

Hazard statements	NC Not Classified
--------------------------	-------------------

2.3. Other hazards

SECTION 3: Composition/information on ingredients

3.1. Substances

Product name	ALOE VERA JUICE 1:1 CONCENTRATE
REACH registration notes	REACH exempt - Mixture - a natural substance. Regulation (EC) No 987/2008, Annex II, paragraph 8.

SECTION 4: First aid measures

4.1. Description of first aid measures

19-20 Sandleheath Industrial Estate, Fordingbridge, Hampshire, SP6 1PA, UK
Tel: 01425 655555 Email: technical@madarcorporation.co.uk

ALOE VERA JUICE 1:1 CONCENTRATE

Inhalation	Remove person to fresh air and keep comfortable for breathing. Get medical attention if any discomfort continues.
Ingestion	No adverse effects known. Drink warm water (30-40c) and seek medical attention if any discomfort occurs.
Skin contact	Remove contaminated clothing and rinse skin thoroughly with water. Get medical attention if any discomfort continues.
Eye contact	Rinse immediately with plenty of water. Remove any contact lenses and open eyelids wide apart. Continue to rinse for at least 15 minutes and get medical attention.

4.2. Most important symptoms and effects, both acute and delayed

4.3. Indication of any immediate medical attention and special treatment needed

SECTION 5: Firefighting measures

5.1. Extinguishing media

Suitable extinguishing media Use as appropriate carbon dioxide (CO₂), dry chemical or foam

Unsuitable extinguishing media Do not use water jet as an extinguisher, as this will spread the fire.

5.2. Special hazards arising from the substance or mixture

Specific hazards May produce Carbon Dioxide and unidentified organic compounds.

5.3. Advice for firefighters

Protective actions during firefighting Cool containers exposed to flames with water until well after the fire is out. Do not inhale explosion and/or combustion gases. Use self contained breathing apparatus.

SECTION 6: Accidental release measures

6.1. Personal precautions, protective equipment and emergency procedures

Personal precautions Avoid contact with skin, eyes and clothing. Take care as floors and other surfaces may become slippery.

6.2. Environmental precautions

Environmental precautions Avoid the spillage or runoff entering drains, sewers or watercourses.

6.3. Methods and material for containment and cleaning up

Methods for cleaning up Absorb with liquid binding material (e.g sand, diatomaceous earth, acid or universal binding agents). Collect in closed and suitable containers for disposal. Wash spill site after material pick up is complete.

6.4. Reference to other sections

Reference to other sections For personal protection, see Section 8. For waste disposal, see Section 13.

SECTION 7: Handling and storage

7.1. Precautions for safe handling

Usage precautions Apply good manufacturing practice and industrial hygiene practices. Keep containers sealed when not in use. Provide adequate ventilation. Do not eat, drink or smoke when using this product.

7.2. Conditions for safe storage, including any incompatibilities

Storage precautions Store in tightly-closed, original container in a dry, cool and well-ventilated place. Keep away from heat, sparks and open flame. Protect from freezing and direct sunlight.

7.3. Specific end use(s)

19-20 Sandeheath Industrial Estate, Fordingbridge, Hampshire, SP6 1PA, UK
Tel: 01425 655555 Email: technical@madarcorporation.co.uk

ALOE VERA JUICE 1:1 CONCENTRATE

SECTION 8: Exposure controls/Personal protection

8.1. Control parameters

8.2. Exposure controls

Protective equipment



Eye/face protection

Chemical splash goggles or face shield.

Hand protection

Chemical resistant gloves (PVC)

Hygiene measures

Good personal hygiene procedures should be implemented.

Respiratory protection

Generally unnecessary in a well ventilated area.
If ventilation is insufficient, respiratory protection must be worn.

Environmental exposure controls

Avoid discharging into drains.

SECTION 9: Physical and chemical properties

9.1. Information on basic physical and chemical properties

Appearance

Liquid.

Colour

Colourless. to Amber.

Odour

Characteristic.

Relative density

0.997 - 1.009 @ 20°C

9.2. Other information

Hydrocarbon Content

SECTION 10: Stability and reactivity

10.1. Reactivity

Reactivity

The substance is stable under normal storage and handling conditions.

10.2. Chemical stability

Stability

Stable under the prescribed storage conditions.

10.3. Possibility of hazardous reactions

Possibility of hazardous reactions

None known.

10.4. Conditions to avoid

Conditions to avoid

Avoid heat, flames and other sources of ignition.

10.5. Incompatible materials

Materials to avoid

Strong oxidising agents. Strong acids. Strong alkalis.

10.6. Hazardous decomposition products

Hazardous decomposition products

None known.

SECTION 11: Toxicological information

ALOE VERA JUICE 1:1 CONCENTRATE

11.1. Information on toxicological effects

Toxicological effects No additional data available.

SECTION 12: Ecological information

Ecotoxicity No negative effects on the aquatic environment are known.

12.1. Toxicity

12.2. Persistence and degradability

Persistence and degradability Expected to be readily biodegradable.

12.3. Bioaccumulative potential

Bioaccumulative potential Based on available data the classification criteria are not met.

12.4. Mobility in soil

12.5. Results of PBT and vPvB assessment

Results of PBT and vPvB assessment This substance is not classified as PBT or vPvB according to current EU criteria.

12.6. Other adverse effects

SECTION 13: Disposal considerations

13.1. Waste treatment methods

Disposal methods Dispose of contents/container in accordance with national regulations.

SECTION 14: Transport information

General The product is not covered by international regulations on the transport of dangerous goods (IMDG, IATA, ADR/RID).

14.1. UN number

Not applicable.

14.2. UN proper shipping name

Not applicable.

14.3. Transport hazard class(es)

No transport warning sign required.

14.4. Packing group

Not applicable.

14.5. Environmental hazards

Environmentally hazardous substance/marine pollutant

No.

14.6. Special precautions for user

Not applicable.

14.7. Transport in bulk according to Annex II of MARPOL and the IBC Code

Transport in bulk according to Annex II of MARPOL 73/78 and the IBC Code Not applicable.

SECTION 15: Regulatory information

19-20 Sande Heath Industrial Estate, Fordingbridge, Hampshire, SP6 1PA, UK

Tel: 01425 655555 Email: technical@madarcorporation.co.uk

ALOE VERA JUICE 1:1 CONCENTRATE

15.1. Safety, health and environmental regulations/legislation specific for the substance or mixture

EU legislation Regulation (EC) No 1272/2008 of the European Parliament and of the Council of 16 December 2008 on classification, labelling and packaging of substances and mixtures (as amended).

Guidance CHIP for everyone HSG228.

15.2. Chemical safety assessment

No chemical safety assessment has been carried out.

SECTION 16: Other information

Revision date 29/09/2020

Revision 1

SDS number 5486

This information relates only to the specific material designated and may not be valid for such material used in combination with any other materials or in any process. Such information is, to the best of the company's knowledge and belief, accurate and reliable as of the date indicated. However, no warranty, guarantee or representation is made to its accuracy, reliability or completeness. It is the user's responsibility to satisfy himself as to the suitability of such information for his own particular use.

19-20 Sandihealth Industrial Estate, Fordingbridge, Hampshire, SP6 1PA, UK

Tel: 01425 655555 Email: technical@madarcorporation.co.uk

MYSTIC MOMENTS

Product Specification

PRODUCT DETAILS	
Product Name	ALOE VERA JUICE 1:1 CONCENTRATE
Product Code	HEALOEVERAJUIC
INCI Breakdown	>75 to <100 Aloe barbadensis leaf juice >0.1 to < 1.0 Citric Acid <0.1 Sodium benzoate <0.1 Potassium sorbate
Country of Origin / Manufacture	UK from material of mixed origin
Tariff Number	13021970
Natural Status	A natural substance. Regulation (EC) No 987/2008,
Food Grade Status	This material is not suitable for food.
Kosher Certified	Not kosher certified
Halal Certified	Not certified for Halal.
GMO Declaration	To the best of our knowledge and from information received from our supplier, this product does not derive from genetically modified starting raw material, or additives that are derived from genetically modified organisms.
Manufacturing Process	This juice is expressed from the centre fillet of the Aloe plant, Aloe barbadensis liliaceae and reserved by the addition of Citric Acid, Sodium benzoate and potassium sorbate.
Identification	CAS No: NA EINECS No: NA
PHYSICAL AND CHEMICAL CHARACTERISTIC	
Appearance	Liquid
Colour	Colourless to Amber
Odour	Characteristic
Specific Gravity @ 20°C	0.997 - 1.009
pH @ 20°C	3.5 - 5.0
Microbiological test (cfu/g)	<10.0
Solids content (%)	>0.5
FRAGRANCE ALLERGENS	
None Present	
FOOD ALLERGENS	
None Present	
IFRA	
None Present	
STORAGE AND SHELF LIFE	
Storage	Store in tightly closed container with minimum headspace in a cool, dark and dry place.
Shelf Life	24 months unopened and stored as above.

DISCLAIMER: This information relates only to the specific material designated and may not be valid for such material used in combination with any other materials or in any process. Such information is, to the best of the Company's knowledge and belief, accurate and reliable as of the date indicated. However, no warranty, guarantee or representation is made to its accuracy, reliability or completeness. It is the users responsibility to satisfy himself as to the suitability of such information for his own particular use. Where we make a declaration that allergenic material are not present in any product, this statement is made assuming reasonable levels of detection. It is impossible to guarantee the "absolute absence" of any material. It is the ultimate responsibility of the customer to ensure the safety of the intended final product containing this material, by carrying out additional tests if necessary.



Vegan and Vegetarian Statement

IDENTIFICATION	
Product:	Aloe Vera Juice 1:1 Concentrate
Cas No:	N/A
EINECS No:	N/A
STATEMENT	
<p>We, Madar Corporation Limited, from information received from our supplier, hereby declare that the material listed above is suitable for the following:</p> <p>Vegans (Excludes all animal derived products, including dairy, eggs, leather, bee products (beeswax and honey).</p> <p>Lacto Vegetarians (Same as vegan but allows milk products and bee products.</p> <p>Ovo Vegetarians (Same as vegan but allows egg products and bee products)</p> <p>It does not contain any animal ingredients or animal by products. No animal ingredients or by products are used in the manufacturing process.</p> <p>04/11/2020</p> <p>This document represents to the best of our knowledge and from information received from our supplier. It does not release the buyer from the obligation to carry out an examination of the goods received. All uses made by the buyer are done under their own responsibility.</p>	